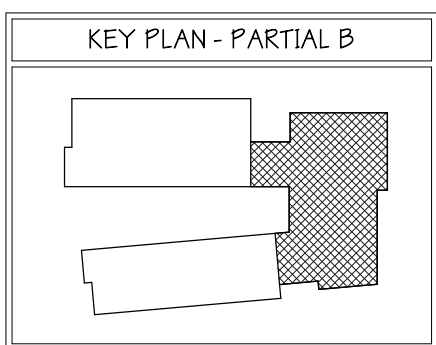


REVISION 2
 - UPDATED STAIR D
 - UPDATED COLUMN LOCATIONS PER PODIUM AT 2ND FLOOR
 - UPDATED WALL SCHEDULE



Parking Schedule (Not include street parking)

Count	Type Mark	Type
14	C	7'-6" x 15' - 90 deg
5	HC	8' x 17'-6" - 90 deg - HC
1	HC VAN	8' x 17'-6" - 90 deg VAN
1	HC	8' x 17'-6" - 90 deg - HC
8	LTO	8'-6" x 17'-0" - 90 deg LOW TURNOVER
218	S	9' x 17'-6" - 90 deg
5	T	9' x 17'-6" - 90 deg TANDEM

TOTAL PARKING: 252

Wall Schedule RE A5.1A

Mark	Description	Fire Rating
A	5 1/2" EXTERIOR WALL - BOARD & BATTEN	1 HR
B	5 1/2" EXTERIOR WALL - METAL PANEL	1 HR
C	5 1/2" EXTERIOR WALL - BRICK	1 HR
E	SHAFT LINER WALL ASSEMBLY @ TRASH CHUTE W/ FURR OUT	2 HR
F	SHAFT LINER WALL ASSEMBLY @ TENANT SEPARATION	2 HR
G		
G SIM		
H	TENANT SEPARATION WALL ASSEMBLY WITH DOUBLE GYP.	1 HR
J	STAGGERED STUD WALL ASSEMBLY @ INT. CORRIDOR	30 MIN
K		
L	8" CMU BLOCK WALL ASSEMBLY	2 HR

Wall Schedule RE A5.1A

Mark	Description	Fire Rating
M	8" CMU BLOCK WALL ASSEMBLY	2 HR
N	8" CMU BLOCK WALL ASSEMBLY	2 HR
P	CONCRETE WALL	2 HR
Q	SHAFT LINER WALL ASSEMBLY @ FCB	2 HR
R	SHAFT LINER WALL ASSEMBLY @ TRASH CHUTE W/ FURR OUT	2 HR
S	5 1/2" PARTITION @ OCCUPANCY SEPARATION	1 HR
T	5 1/2" EXTERIOR BRICK W/ SHAFT LINER	2 HR
U	5 1/2" EXTERIOR BOARD & BATTEN W/ SHAFT LINER	2 HR
V	STAGGERED STUD WALL ASSEMBLY @ INT. CORRIDOR	30 MIN
W	5 1/2" TENANT SEPARATION WALL ASSEMBLY WITH DOUBLE GYP.	1 HR

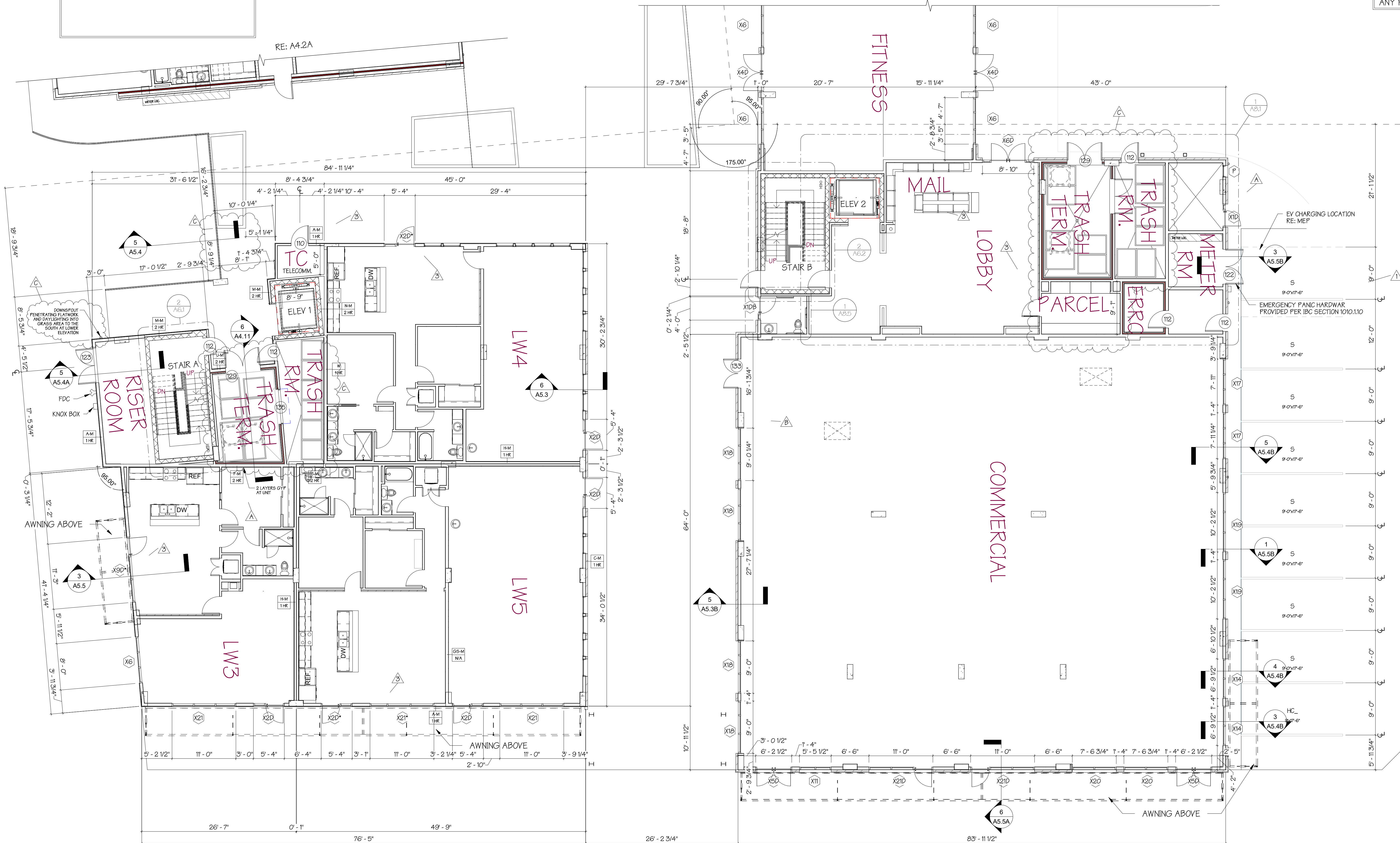
EXTERIOR WALL MATERIAL LEGEND

- BRICK VENEER
- CMU WALL
- 2X6 PLATES @ TOP & BOTTOM W/ STAGGERED 2X4 STUDS

PROVIDE STAIRWAY IDENTIFICATION AT EACH FLOOR LEVEL IN ALL ENCLOSED STAIRWAYS

PROVIDE PORTABLE FIRE EXTINGUISHERS WITHIN 75' OF TRAVEL DISTANCE FROM ANY POINT IN THE BUILDING

REVISION A
 - UPDATED WALL TAGS THROUGHOUT UNDER-PODIUM AREAS, RE: A5.1C ASSEMBLY DETAILS FOR UNDER-PODIUM METAL FRAME WALL DETAILS



DRAWN BY: APF
 CHECKED BY: BBL
 PROJECT #: 20-2452

REGISTERED ARCHITECT
 BRIAN B. LUCKY
 State of Texas
 28114
 Issue: 09/19/23 EXP: 02/28/24

ST. ELMO DEVELOPMENT, LLC
 14747 N. NORTHSIGHT, SUITE 111-431,
 SCOTTSDALE, AZ 85260

ARCHITECTURE - LAND PLANNING - LANDSCAPE DESIGN - CONSTRUCTION ADMINISTRATION -
KELLY GROSSMAN
 ARCHITECTS, PLLC
 280 ADIE BOY ROAD, SUITE 200, AUSTIN, TEXAS 78746 (PH: 1-512-227-3287)
 Copyright © 2013-2023 Kelly Grossman Architects, PLLC. All rights reserved. The management depicted herein are the sole proprietors of KGA, PLLC and may not be reproduced in any form without written permission.
 www.kellygrossmanarchitects.com

THE STATION AT ST. ELMO
 4510 TERRY O'LANE
 AUSTIN, TX 78745

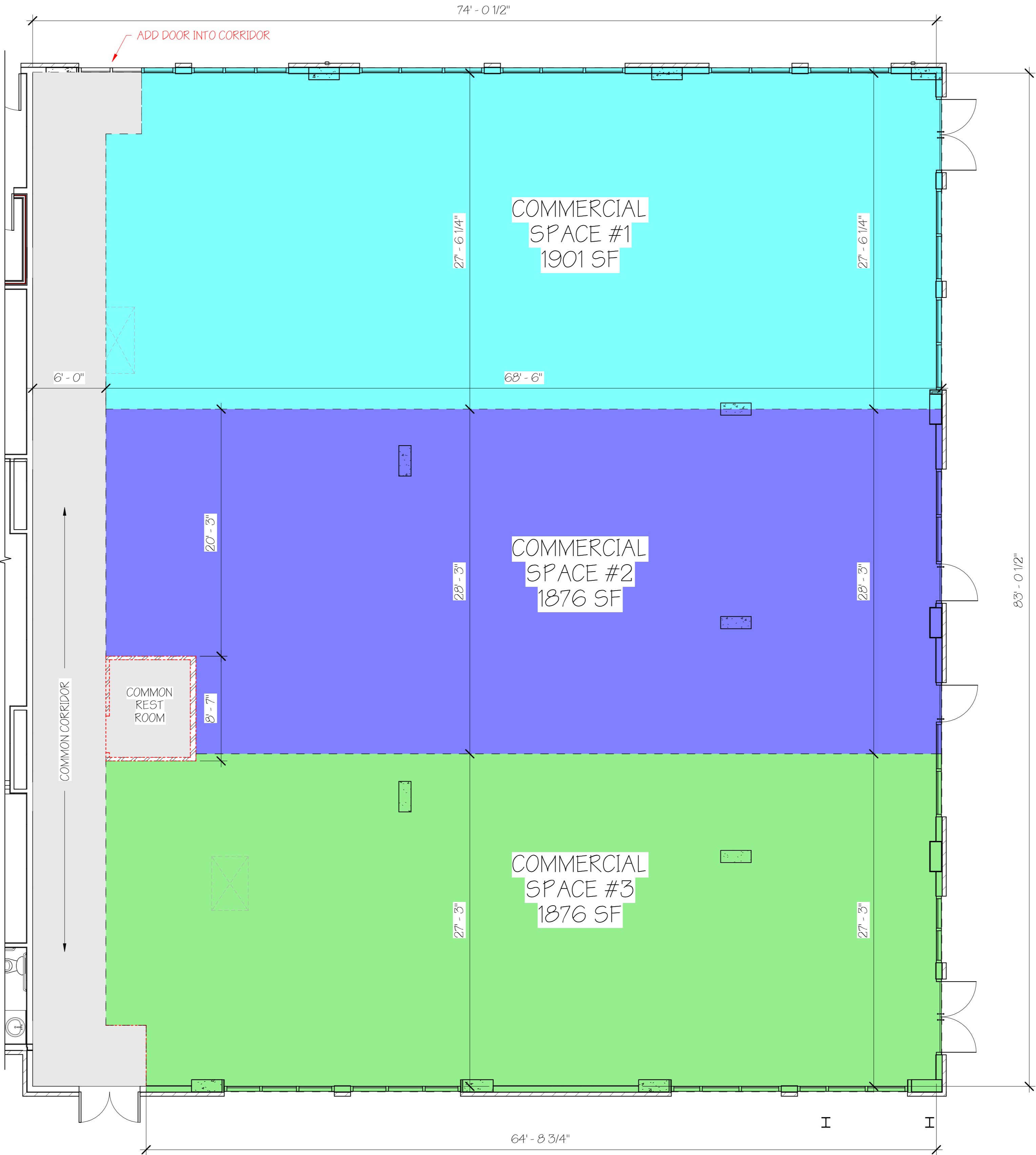
No.	Revision	Date
2	Revision 2	10/27/21
3	Revision 3	1/24/22
A	Revision A	11/23/22
B	Revision B	6/5/23
C	Revision C	08/18/23

ISSUED FOR PERMIT: 01/20/22
 ISSUED FOR BID: 02/04/2022
 ISSUED FOR CONSTRUCTION

DWG NAME: 1ST FLOOR PLAN - PARTIAL B
 DATE: 09/19/2023
 DESCRIPTION: 1ST FLOOR PLAN - PARTIAL B
 SHEET: A4.2B

1 1ST FLOOR PLAN - PARTIAL B
 1/8" = 1'-0"

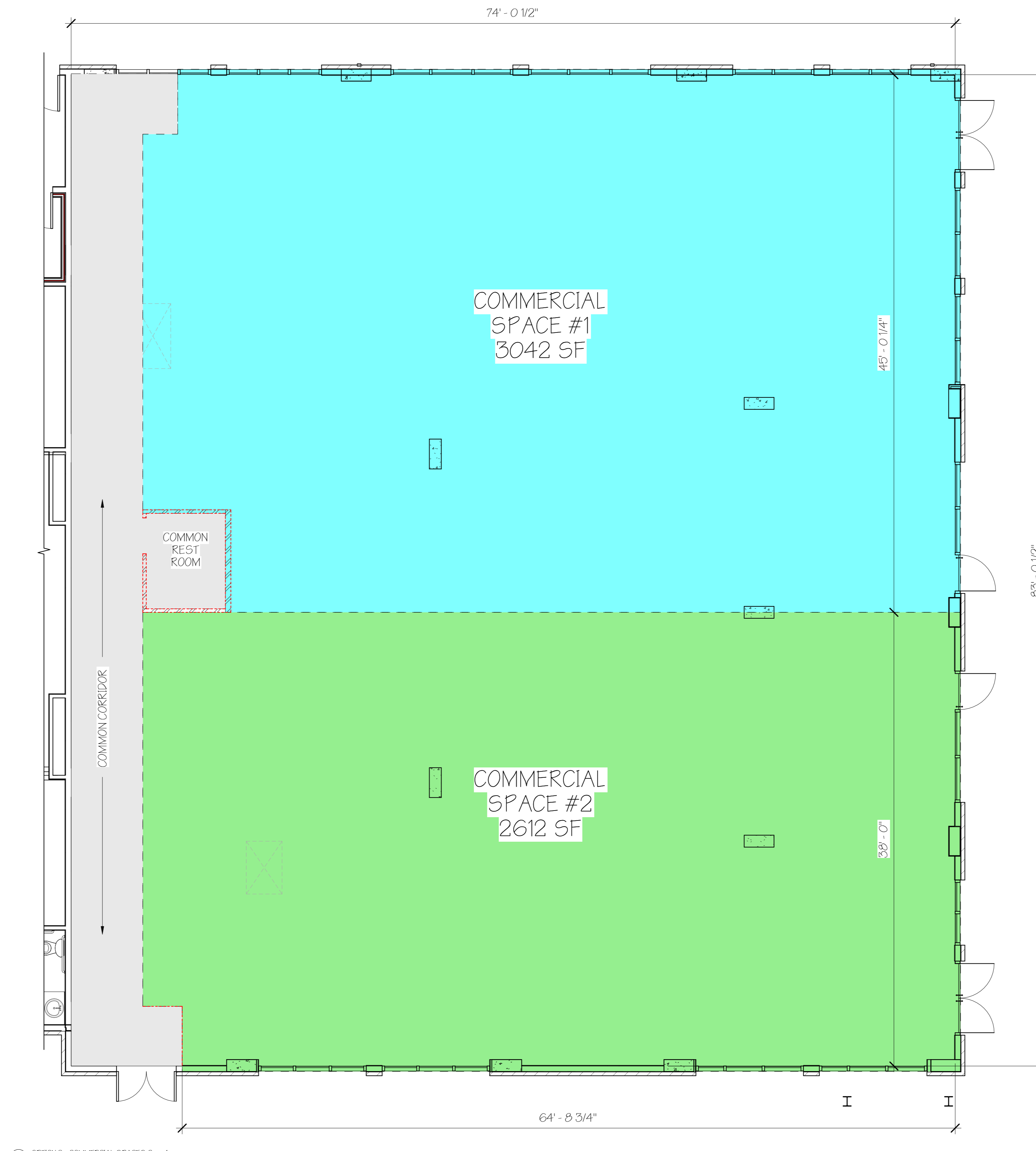
OPTION 2B - THREE COMMERCIAL SPACES



THE STATION AT ST. ELMO
 4510 TERRY-O LANE
 AUSTIN, TX. 78745

ST. ELMO DEVELOPMENT, LLC
 14747 N. NORTHSIGHT, SUITE 111-431, SCOTTSDALE, AZ
 85260

OPTION 2C - TWO COMMERCIAL SPACES



1 OPTION 2 - COMMERCIAL SPACES Copy 1
3/16" = 1'-0"

THE STATION AT ST. ELMO
4510 TERRY-O LANE
AUSTIN, TX. 78745

ST. ELMO DEVELOPMENT, LLC
14747 N. NORTHSIGHT, SUITE 111-431, SCOTTSDALE, AZ
85260